

# Remote Desktop Connection

## Remote Access

To use any computer from IMCF you have to have reservation in the IMCF booking system (currently Ceitec booking system). Amongst the computers are Workstation 1 (only available remotely) and Offline Analysis computers OA1, OA2, OA3, OA4 and OA5.

If working outside of the BIOCEV internal networks, to access the computers remotely you must first connect by VPN to the internal network using the manual at [intranet.biocev.org/](http://intranet.biocev.org/).

There are two options to connect to the devices remotely - by Remote Desktop Connection (RDC) or by using Virtual Network Computing (VNC). Remote Desktop Connection should be installed in any computer with Windows OS (in Czech: Připojení ke vzdálené ploše), while to use VNC separate third-party software needs to be installed.

Users outside Faculty of Science, BIOCEV, must ask IMCF staff (dali-bor.panek@natur.cuni.cz) for access to RDC and VNC services. Please provide your BIOCEV user name for access via VPN and/or IP address for direct access from computers at BIOCEV.

To access software with a floating license RDC may be used. However, to access software with node-locked license or node-locked license at the Dongle server user must connect via VNC (continue to Section 3). RDC is more user-friendly and offers better resolution, thus use VNC only when necessary.

## 1 Remote Desktop Connection

Remote Desktop Connection should be installed in any computer with Windows OS (in Czech: Připojení ke vzdálené ploše).

### Instructions

Instructions to connect to the workstation by Remote Desktop Connection (shown for Workstation 1, details for other computers in Hardware Overview):

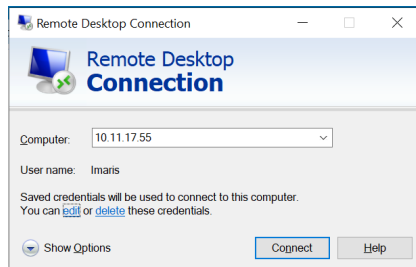
**Computer (IP address):** 10.11.17.55

**User name:** User Workstation 1

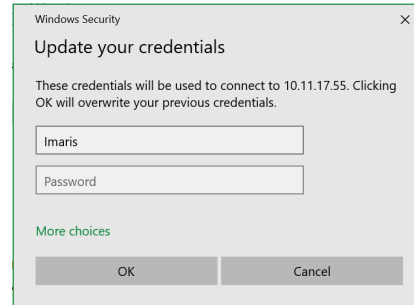
**Password:** imcf

You may need to click on **More choices** and **Use a different account**, in case the user name filled does not match desired user name. Password is

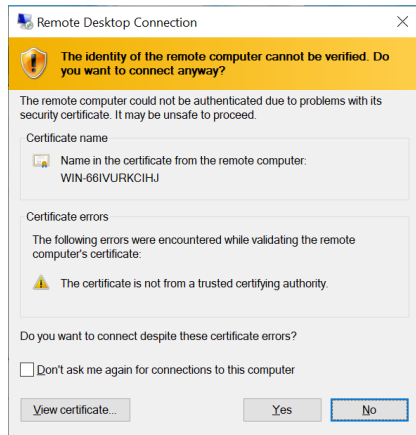
submitted after pressing Connect. In a warning message about the identity of the remote computer you should connect anyway.



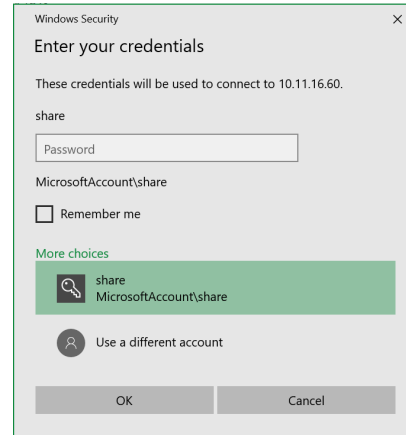
(a) Remote Desktop Connection.



(b) Password submission.



(c) Warning message.



(d) Use a different account.

## 2 Virtual Network Computing

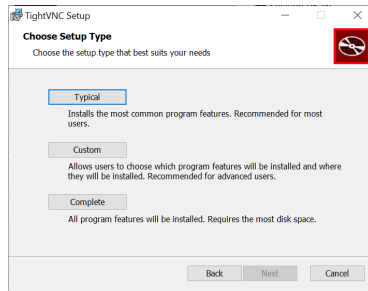
To connect remotely to devices by VNC, you have to install third-party software, for our purpose TightVNC.

### 2.1 Installation of TightVNC

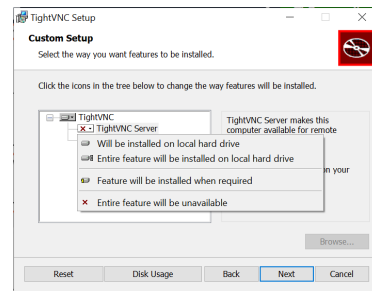
To install TightVNC on your computer proceed through each step as follows:

- **Download TightVNC** from this link: [tightvnc.com/download](https://tightvnc.com/download).
- Choose **Custom Setup**
- Click on TightVNC Server and choose **Entire feature will be unavailable**

- **Proceed with installation**



(a) Choose Custom Setup.



(b) Click on TightVNC Server and choose Entire feature will be unavailable.

## 2.2 Connect to device

You may use TightVNC on your local computer or on offline analysis computer in IMCF (separate reservation in booking is needed).

Instructions (shown for Workstation 1, details for other computers in Hardware Overview) to connect to the workstation in TightVNC Viewer:

**Remote Host:** 10.11.17.55::5903 \*

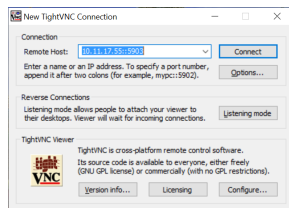
Press **Connect**

**Password:** imcf

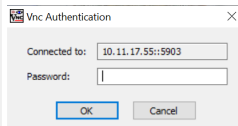
Choose **User Workstation 1** account in Windows

**Password for User Workstation 1 Account:** imcf

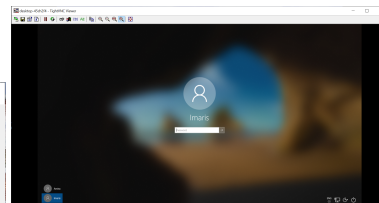
Once connected, set good resolution for your display (default 1920x1080) by adjusting the zoom or enter Full-screen (exit full-screen by pressing Alt+Ctrl+Shift+F).



(a) TightVNC Viewer - IP address.



(b) Password submission.



(c) Choose User Workstation 1 account and submit password.

\*5903 defines the port used for VNC and is used for all hardware devices offered at IMCF