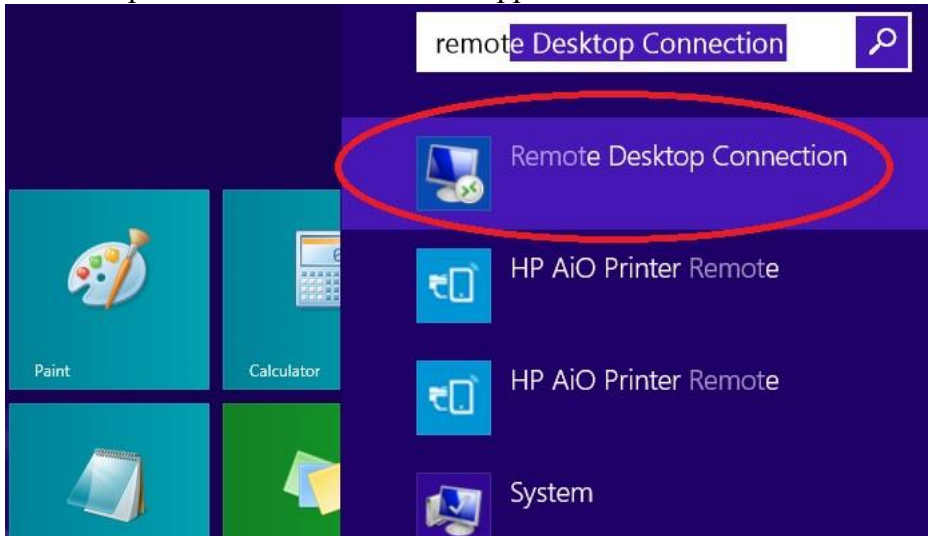


## FlowJo remote access

1. To connect to FlowJo license from home (and not just from your BIOCEV office) - please use the connection to BIOCEV server through FortiClient first.  
*Users outside Faculty of Science, BIOCEV, must ask IMCF staff ([dalibor.panek@natur.cuni.cz](mailto:dalibor.panek@natur.cuni.cz)) for access to RDC and VNC services. Please provide your BIOCEV user name for access via VPN and/or IP address for direct access from computers at BIOCEV.*
2. Use Remote desktop connection. In Win8 and higher go to Start and start to write “remote desktop connection”. Click found app.

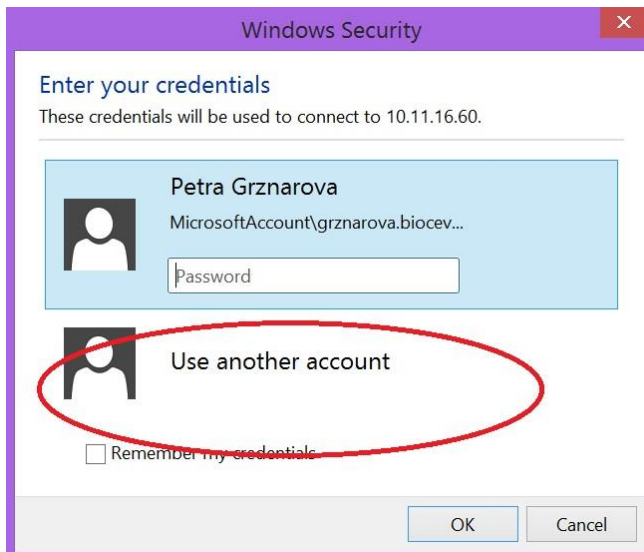


(in case you will have troubles to connect, please refer to [Microsoft helpdesk](#). Usually is the problem in firewall restrictions).

3. Fill the IP address of FlowJo computer and press connect



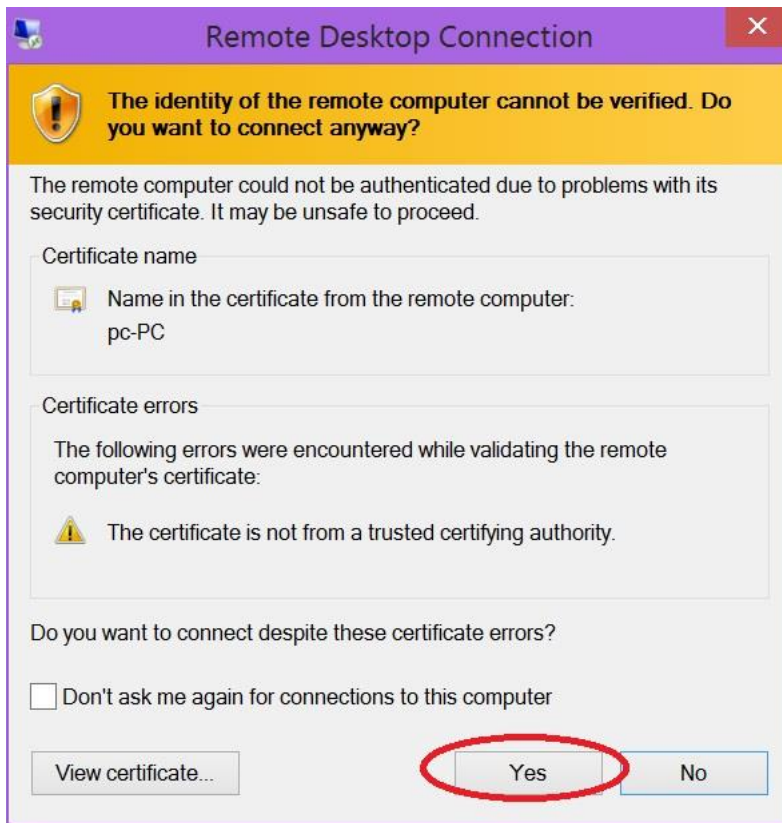
#### 4. Use another account



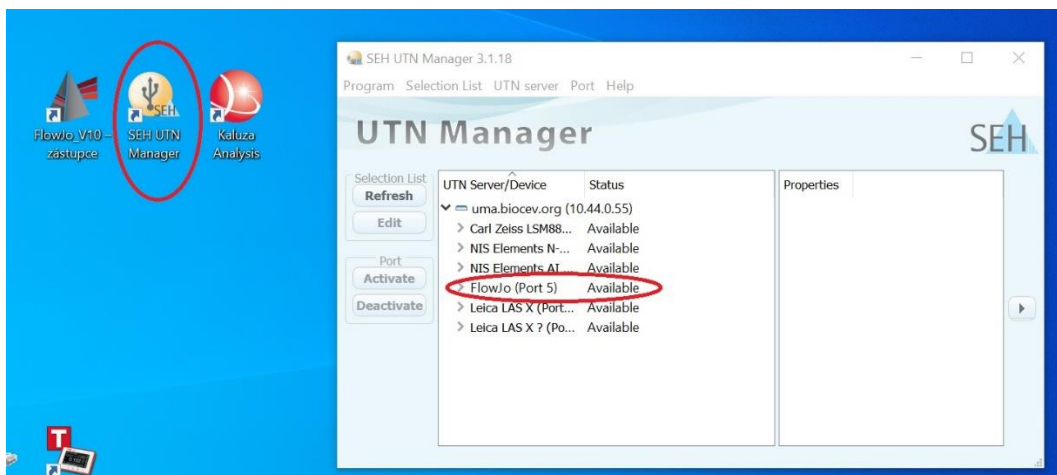
#### 5. Fill out **Login: User OA5 / Password: imcf** and press OK



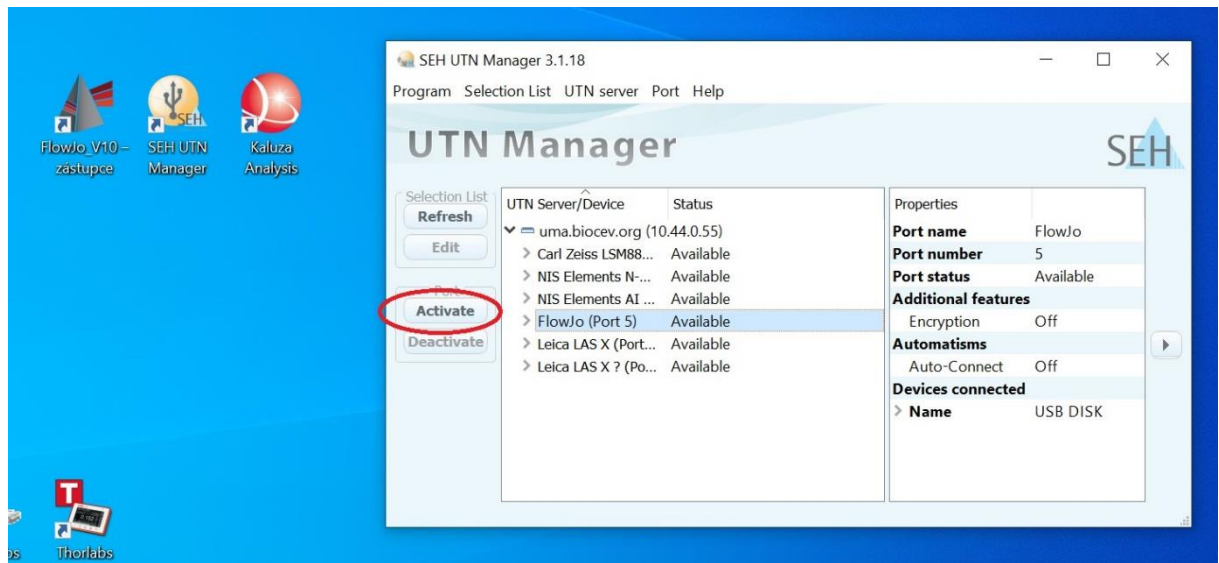
6. Certificate verification window will appear. Just click Yes.



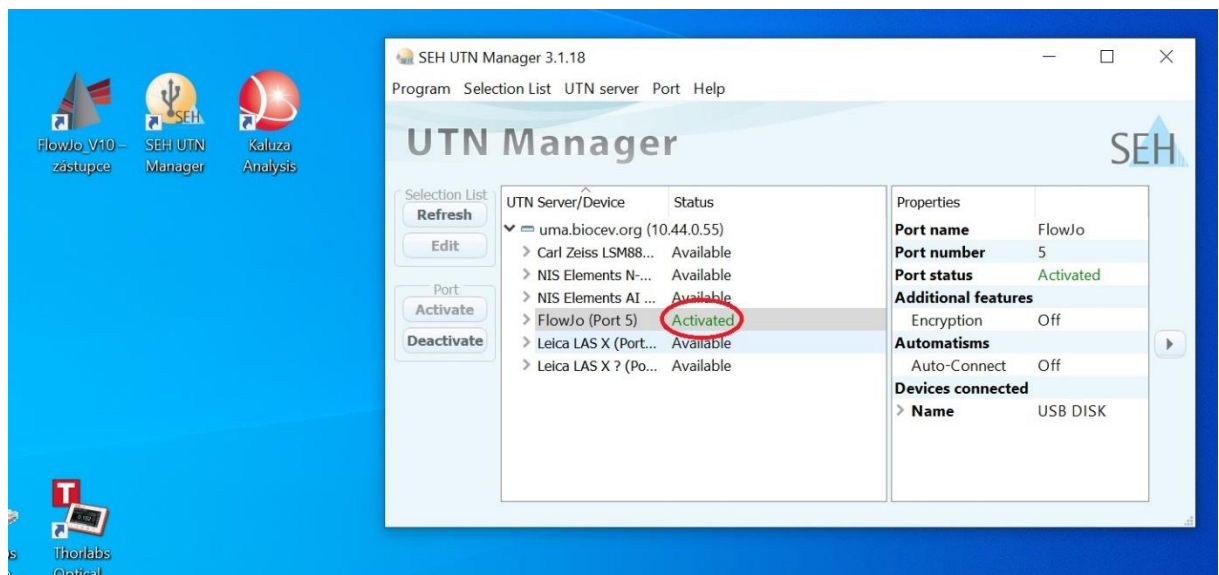
7. You will get connected to the FlowJo PC. In case if different user was logged in before you, Windows will ask if you want to switch users. Click Yes. Remote desktop will appear. First open SEH UTN Manager, where you will find all licenses which are available.



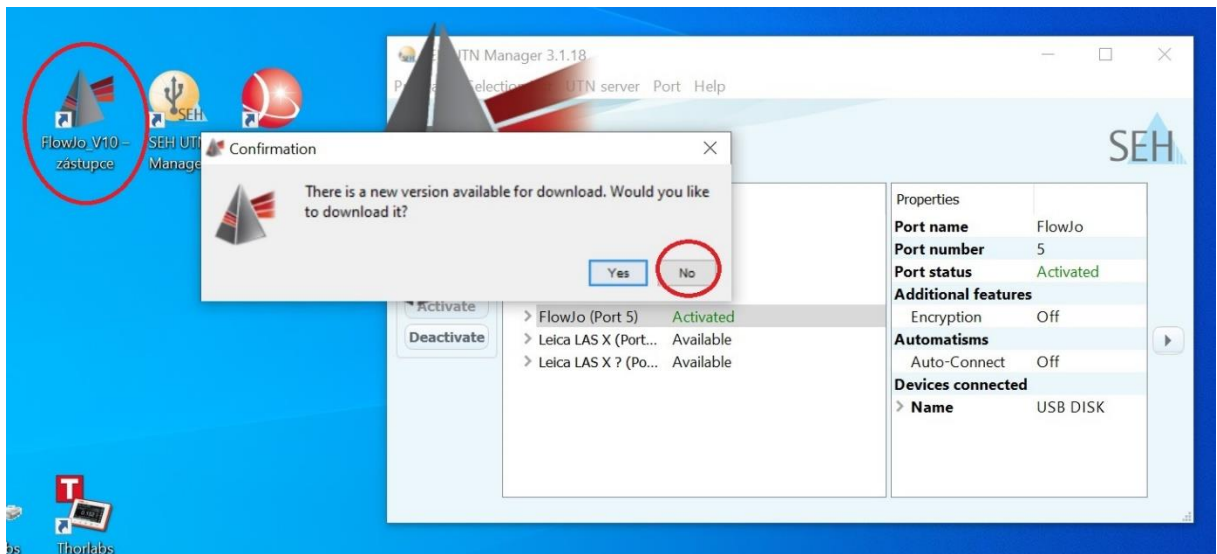
8. Click on FlowJo license and then click Activate



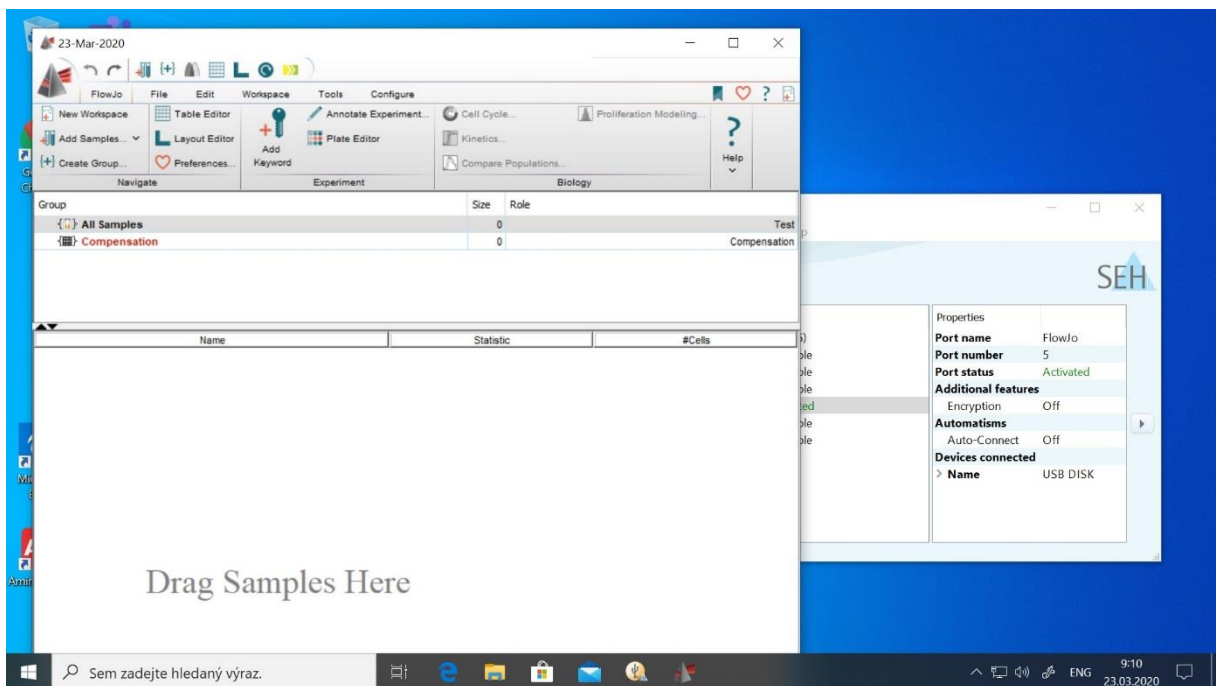
9. Status "Activated" will appear.



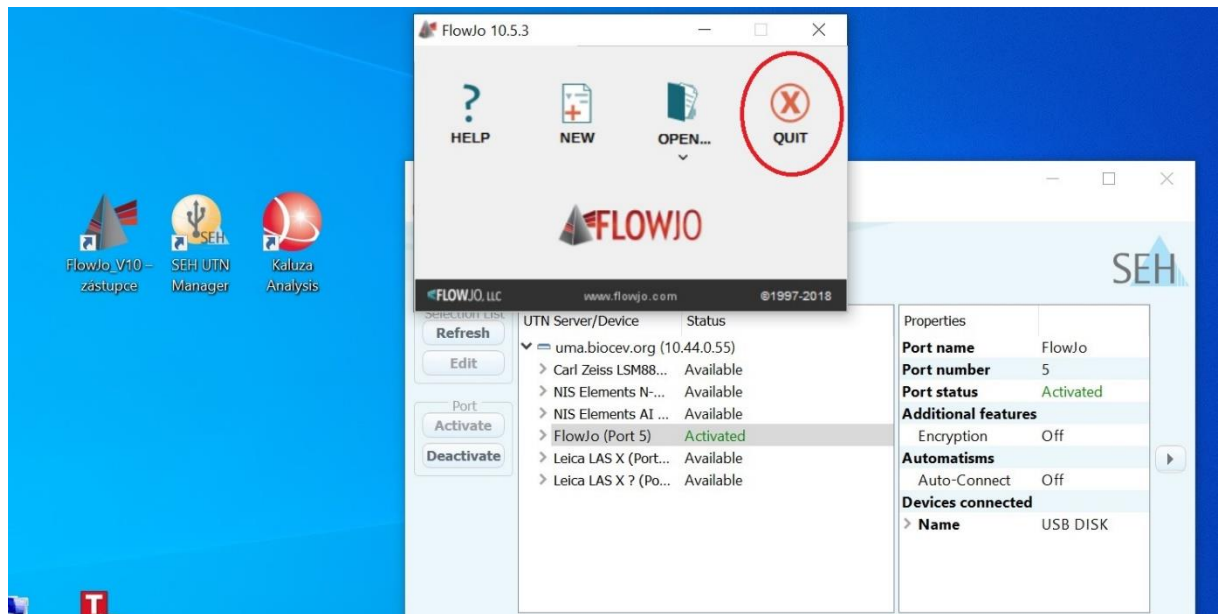
10. Open FlowJo V10-zástupce. Program will ask for update, please click No.



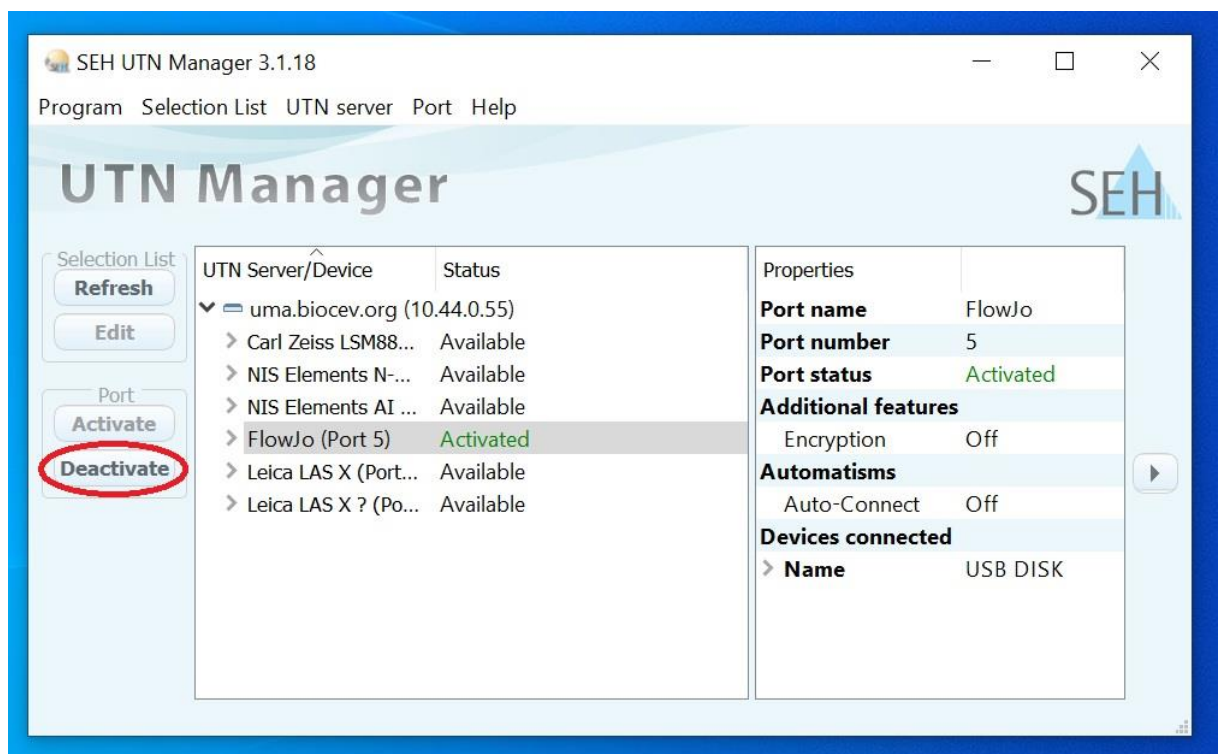
11. Now you can work 😊.



12. At the end of your session, please Quit the software.



13. And be sure that you click at FlowJo license and **Deactivate!**



14. Please, be aware to follow this last step! It'll disable the license for other users if you will skip it!

15. At the end of your session please quit remote desktop connection.

